



MATEVOSYAN



“ÊTRE ARCHITECTE N’EST PAS
SEULEMENT CONSTRUIRE, C’EST
CRÉER DE LARGES ESPACES AVEC PEU
DE PLACE.”

~ YANNICK HEYWANG

*TO BE AN ARCHITECT IS NOT ONLY TO CONSTRUCT; IT
IS TO CREATE LARGE SPACES WITH LITTLE PLACE.*



TABLE OF CONTENTS

> THE HOUSE ON THE QUARRY.....	1-3
> CONNECTING PATHS.....	4-5
> CASE STUDY HOUSE #20:	
BAILEY HOUSE, RICHARD NEUTRA.....	6-7
> A CONTAINER FOR MUSIC.....	8-9

THE HOUSE ON THE QUARRY

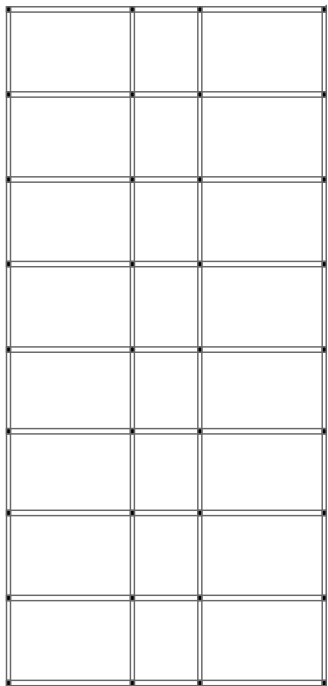
STRUCTURE/FRAME

THIS MULTIFUNCTIONAL HOUSE IS GROUNDED BY ITS CENTRAL HALLWAY THAT ACTS AS THE MAIN FORM OF CIRCULATION.

THE FRIST FLOOR HAS THREE PROMINENT WALLS THAT ESTABLISH THE KITCHEN, DINING ROOM, AND LIVING ROOM AS BOTH CLOSED AND OPEN SPACES.

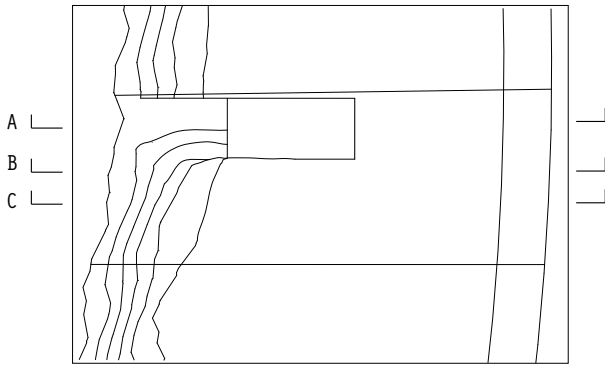
LOCATED ON THE SECOND FLOOR IS A ROOF GARDEN THAT CAN BE FREELY ACCESSED THROUGH THE HALLWAY AND PRIVATELY THROUGH A BEDROOM.

ADDITIONALLY THE THIRD FLOOR SUPPORTS AN EXTENDED OPEN BALCONY FOR OBSERVATION OF THE NIGHT SKY.



2: 1: 2 Ratio

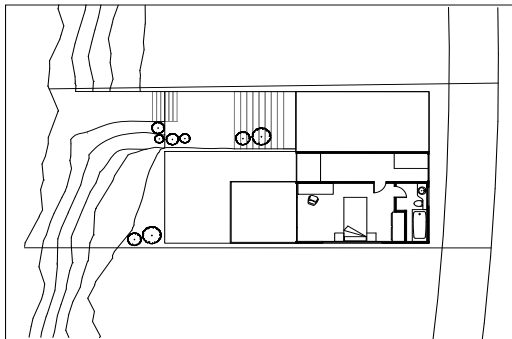
FLOOR PLANS	PROGRAM	PUBLIC/PRIVATE	STAIRWELL
<div>3rd Floor</div>	<div>Bath-room</div> <div>Bedroom</div> <div>Hallway</div> <div>Stairs</div> <div>Balcony</div>		
<div>2nd Floor</div>	<div>Bath-room</div> <div>Bedroom</div> <div>Hallway</div> <div>Stairs</div> <div>Bedroom</div> <div>Bath-room</div>		
<div>1st Floor</div>	<div>Music Room</div> <div>Garden</div> <div>Dock</div> <div>Hallway</div> <div>Stairs</div> <div>Bath-room</div> <div>Closet</div> <div>Entrance</div> <div>Foyer</div> <div>Kitchen</div> <div>Dining</div> <div>Living</div> <div>Patio</div> <div>Space</div>		



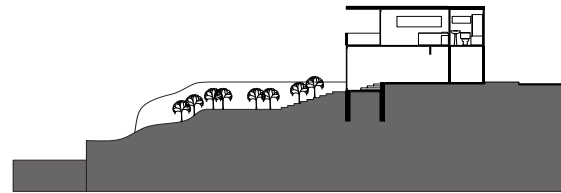
SITE PLAN
SCALE: 1/8" = 1" > N



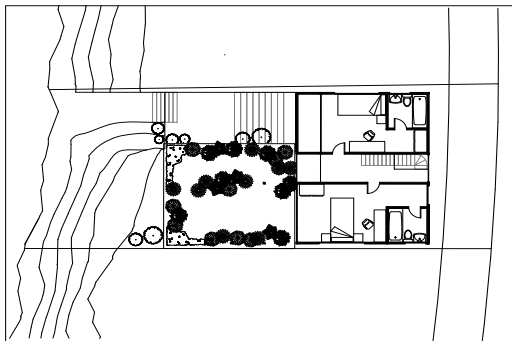
SITE MAP



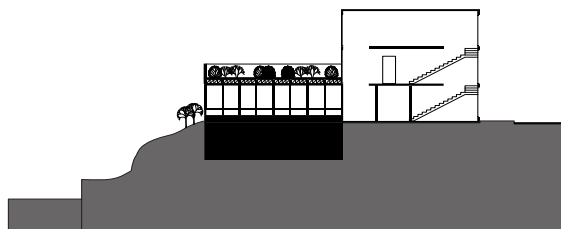
THIRD FLOOR PLAN
SCALE: 1/8" = 1"



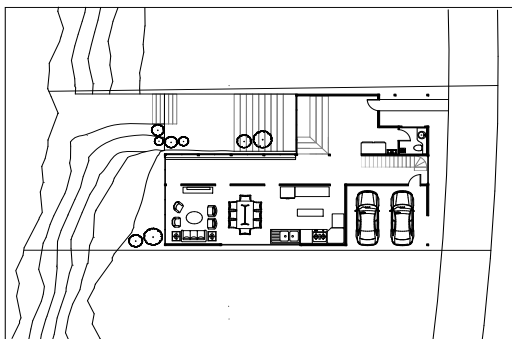
SECTION A
SCALE: 1/8" = 1"



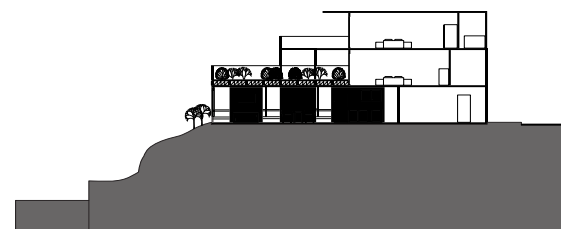
SECOND FLOOR PLAN
SCALE: 1/8" = 1"



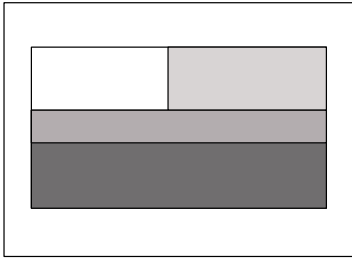
SECTION B
SCALE: 1/8" = 1"



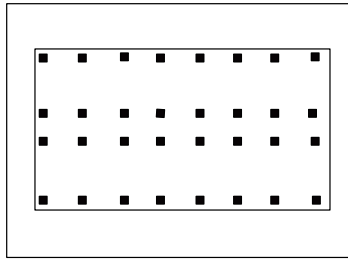
FIRST FLOOR PLAN
SCALE: 1/8" = 1"



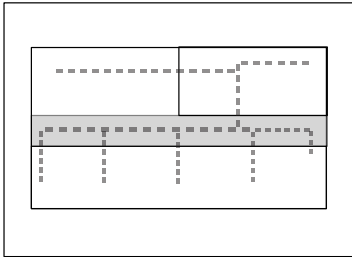
SECTION C
SCALE: 1/8" = 1"



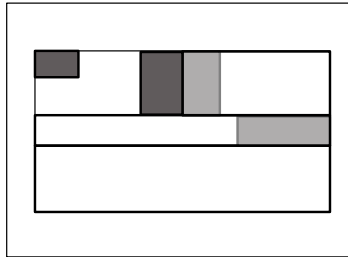
PUBLIC / PRIVATE



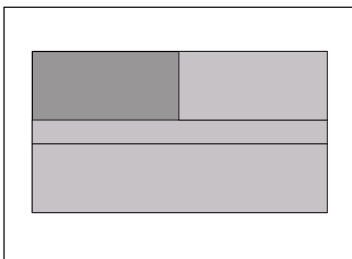
STRUCTURE



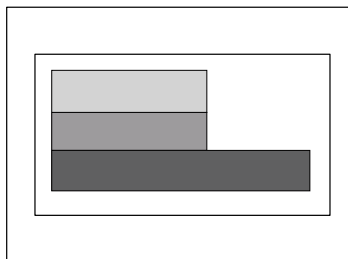
MOVEMENT



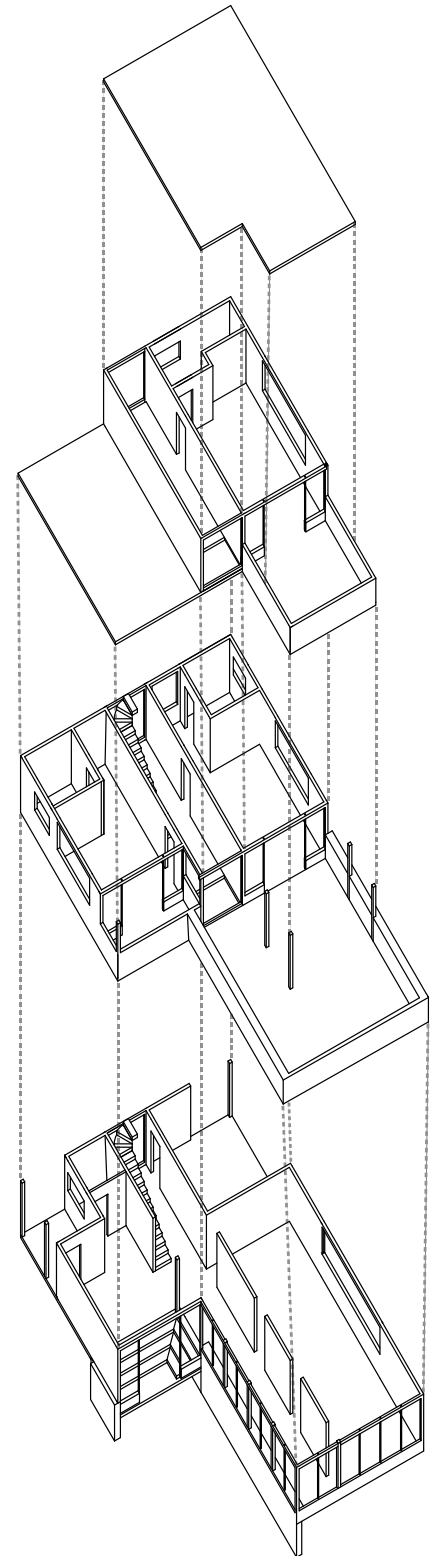
CIRCULATION



OUTDOOR / INDOOR



LEVELS



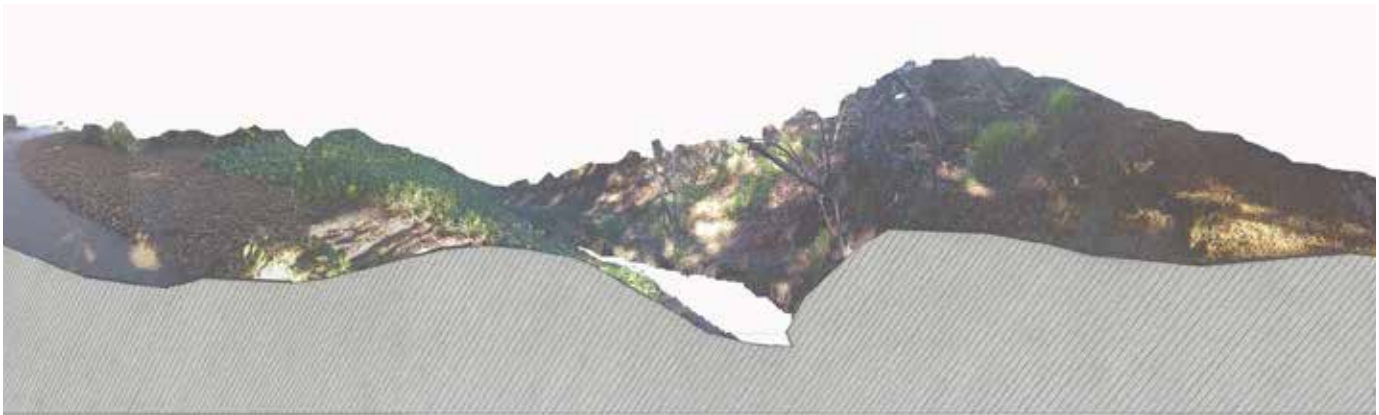
AXONOMETRIC
SCALE: 1/8" = 1"

ARAMI MATEVOSYAN
SECTION: MAEL
ED 11B SPRING 2013
QUARRY PROJECT
PROFESSOR WALTER HOOD



CONNECTING PATHS

THIS BRIDGE IS AN INSTALLATION CROSSING OVER STRAWBERRY CREEK. IN ADDITION TO PROVIDING TRANSPORTATION FROM ONE SIDE TO THE OTHER, THE BRIDGE ALSO INTERACTS WITH RISING WATER FROM THE CREEK DURING FLOODS BY STORING THE WATER IN A MINIATURE STREAM-LIKE CAVITY IN THE MIDDLE OF THE WALKING PATH.



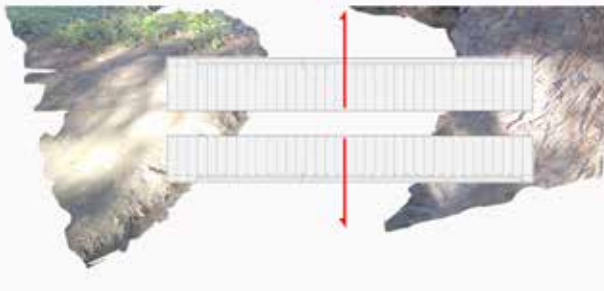
PLAN



SECTION



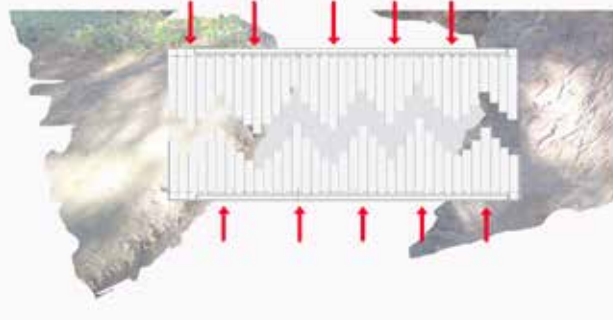
SPLIT



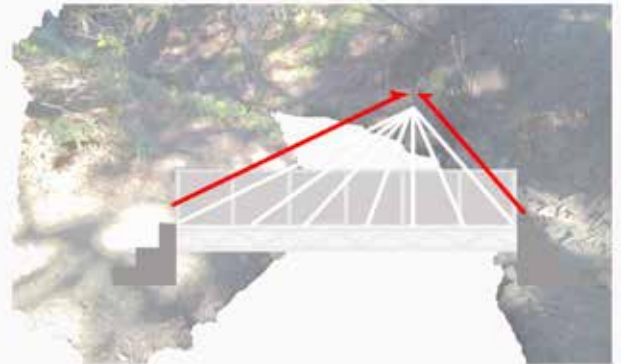
FOLD



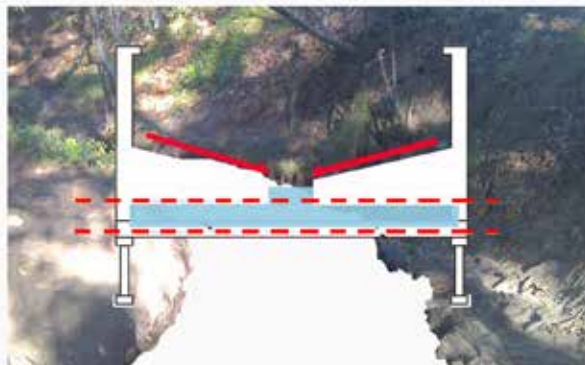
PUSH



PINCH



COLLECT



PRESS

PLAN



CASE STUDY HOUSE #20: BAILEY HOUSE, RICHARD NEUTRA

THE FOCUS OF THE BAILEY HOUSE LIES ITS SEPARATION OF PUBLIC AND PRIVATE SPACE THROUGH THE STRATEGIC ALIGNMENT OF WALLS AND WINDOWS. STRUCTURE DETERMINES THE FLEXIBILITY OF THE WALL AND WINDOW PLACEMENTS.

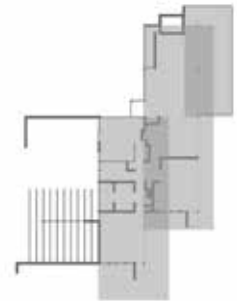
STRUCTURE



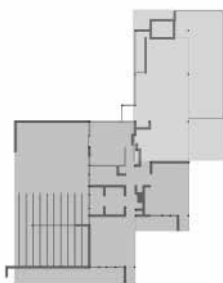
UNIT TO WHOLE



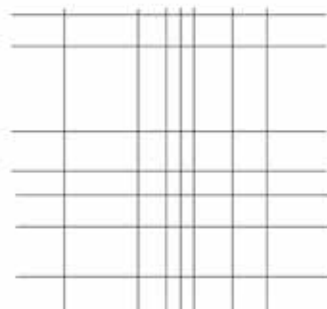
CADENCE



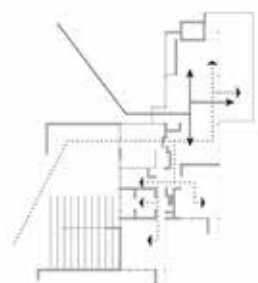
PRIVATE / PUBLIC



RHYTHM



MOVEMENT



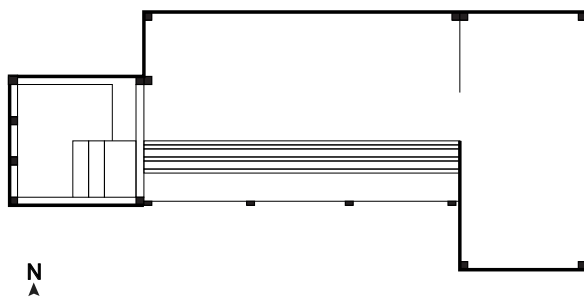


A CONTAINER FOR MUSIC

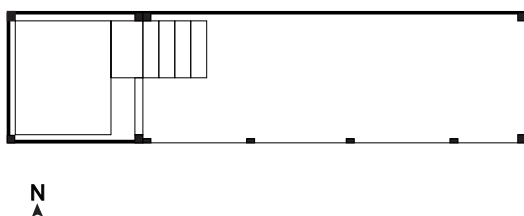
TWO 40-FOOT SHIPPING CONTAINERS ARE TRANSFORMED TO ACCOMMODATE A WORKING SPACE FOR A LUTHIER. THE LUTHIER OPERATES THE STORE ON THE FIRST FLOOR WHILE THE WORK STATION, OFFICE, AND PERSONAL GALLERY ARE LOCATED ON THE SECOND FLOOR.

PLAN

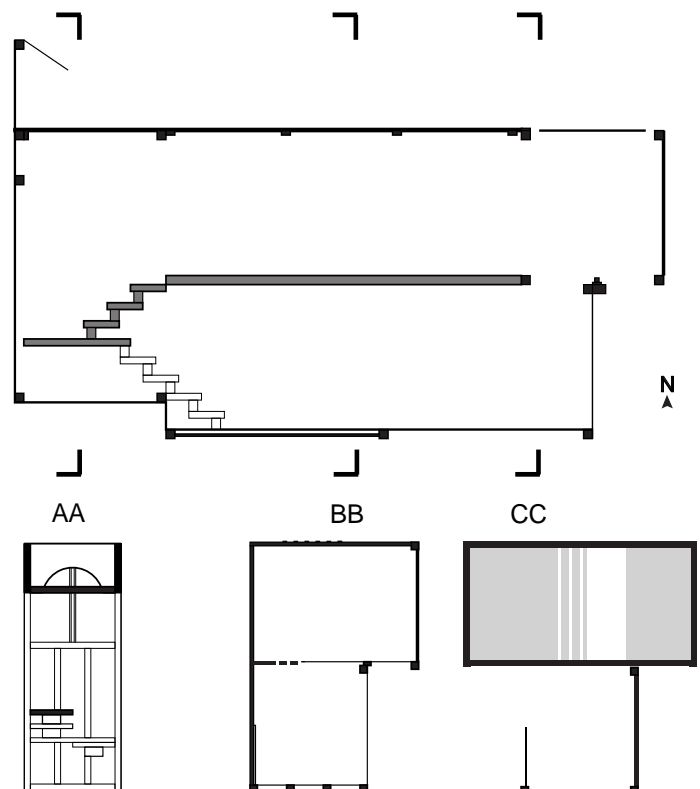
Second Floor

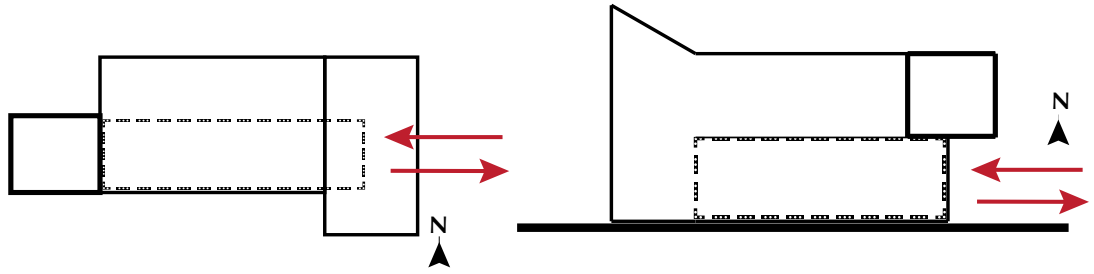


First Floor



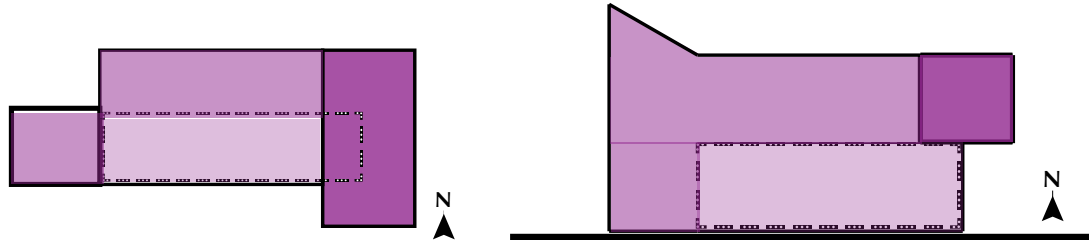
SECTION



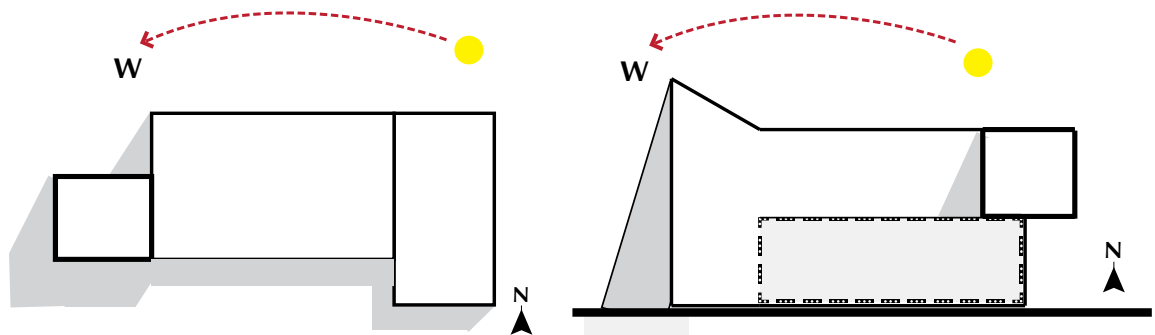


ENTRY / EXIT

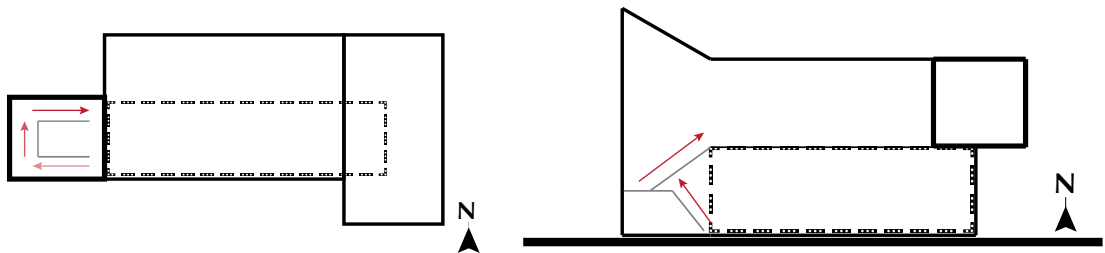
PUBLIC
SEMI-PUBLIC
PRIVATE



PUBLIC / PRIVATE



LIGHT / SHADOW



CIRCULATION



MORNING



NOON



AFTERNOON