

CLASSIFICATIONS

Landslide Zones

Liquefaction Zones

Occupancy / Median Age

(People: Status/Age)

0.0 - 7.4

7.4 - 11

11 - 14

14 - 17

17 - 21

21 - 26

26 - 32

32 - 41

41 - 59

60 - 110

Soil Types (Soil Type/Ft. Sq.)

88 - 1221395

1221396 - 2530059

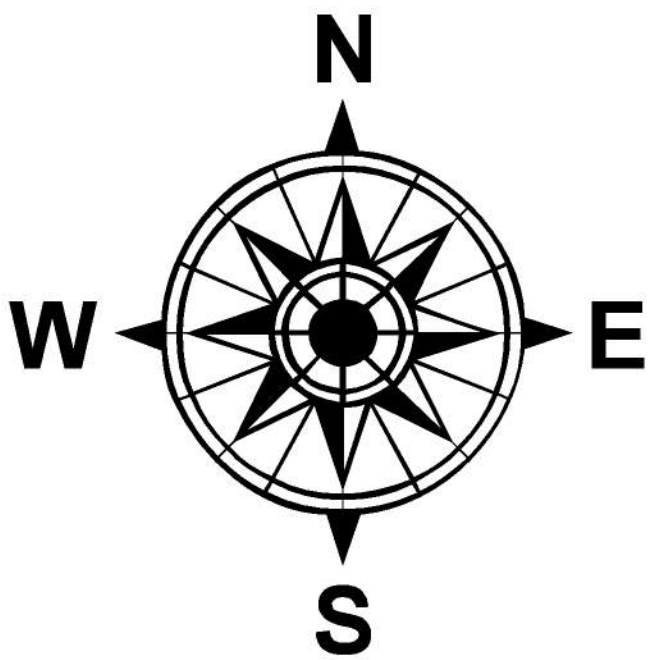
2530060 - 5859575

5859576 - 12150875

12150876 - 30748060

30748061 - 125946660

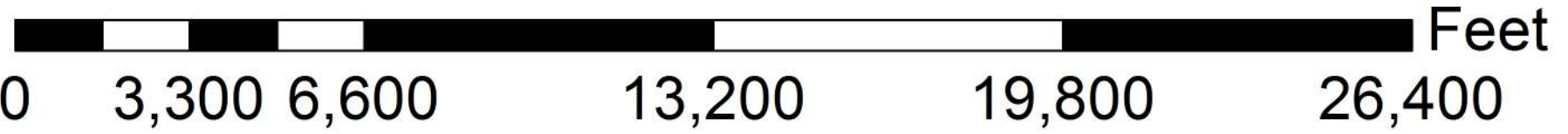
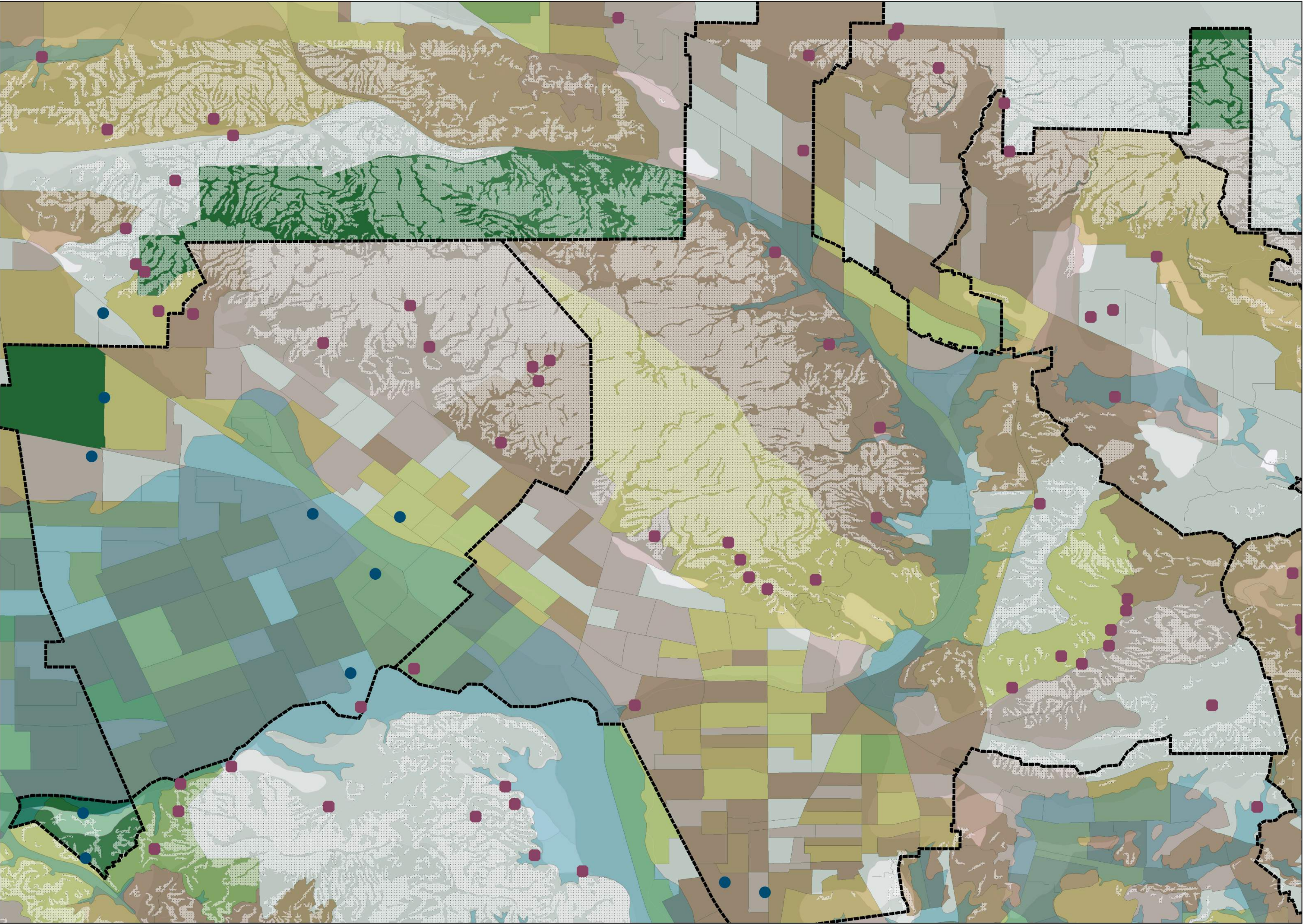
125946661 - 5064528393



MAP:  
City of Burbank (left) & City of Glendale (right)

**CLASSIFICATIONS:**  
The map displays landslide zones denoted by ordered stipples and liquefaction zones denoted by a blue, transparent polygon. These landslide and liquefaction zones represent combined data from the Seismic Hazard Zonation Program of the cities of Burbank and Pasadena (Glendale lies between the two). Glendale has a larger mountain range than Burbank which makes it more susceptible to landslides while a single, large liquefaction zone dominated about half of Burbank’s area. Census information from the American Community Survey of 5-Year Estimates categorizes the ‘Occupancy status’ of Los Angeles County citizens by ‘Median Age’. This data is then classified by Natural Breaks (Jenks) into ten classes. The Soil Types layer was gathered from the Los Angeles County GIS Data Portal and is quantified by its area (soil types per area). Its classification is a Quantile of seven classes.

**CITY SPECIFICS:**  
City Specifics display non-geological or social data. The black outlines are in conjunction to city boundary lines. Rounded, dark magenta squares represent Hydrological Points. These points refer to springs, water intakes, wells, waterfalls, reservoir points, etc., that were gathered from the National Hydrology Dataset. Simple, dark teal circles represent Alternative Fuel Stations. When comparing the two cities of Burbank and Glendale, there are about an equal number of hydrological points and alternative fuel stations in Burbank but an a greater number of hydrological points than alternative fuel stations in Glendale.



Burbank - Glendale, CA  
Los Angeles County

DATUM: D\_North\_American\_1983  
PROJECTION: GCS\_North\_American\_1983

ARAMI MATEVOSYAN  
October 5, 2014  
MAP SCALE: 1:38,000

CITY SPECIFICS

- Hydrological Points
- Alternative Fuel
- City Boundaries

SOURCES:  
Seismic Hazard Zonation Program // California Department of Conservation  
<http://gmw.consrv.ca.gov/shmp/MapProcessor.asp?Action=Quad&Location=SoCal>  
Los Angeles County GIS Data Portal // Enterprise GIS  
<http://egis3.lacounty.gov/dataportal/>  
State of California Geoportal  
<http://portal.gis.ca.gov/geoportal/catalog/main/home.page>  
National Hydrology Dataset // USGS - The National Map  
<http://viewer.nationalmap.gov/viewer/nhd.html?p=nhd>  
Geography // United States Census Bureau  
<http://www.census.gov/geo/maps-data/data/tiger-data.html>